

# Active Glass

The AGC logo consists of the letters 'AGC' in a bold, blue, sans-serif font. The letter 'A' is positioned to the left of 'G', and 'C' is to the right. A small red horizontal bar is located at the top right of the letter 'G'. The logo is centered within a white square.

**AGC**

GLASS UNLIMITED

FOCUS ON  
LED-EMBEDDED GLASS

GLASSILED

# AGC Glass Europe presents...

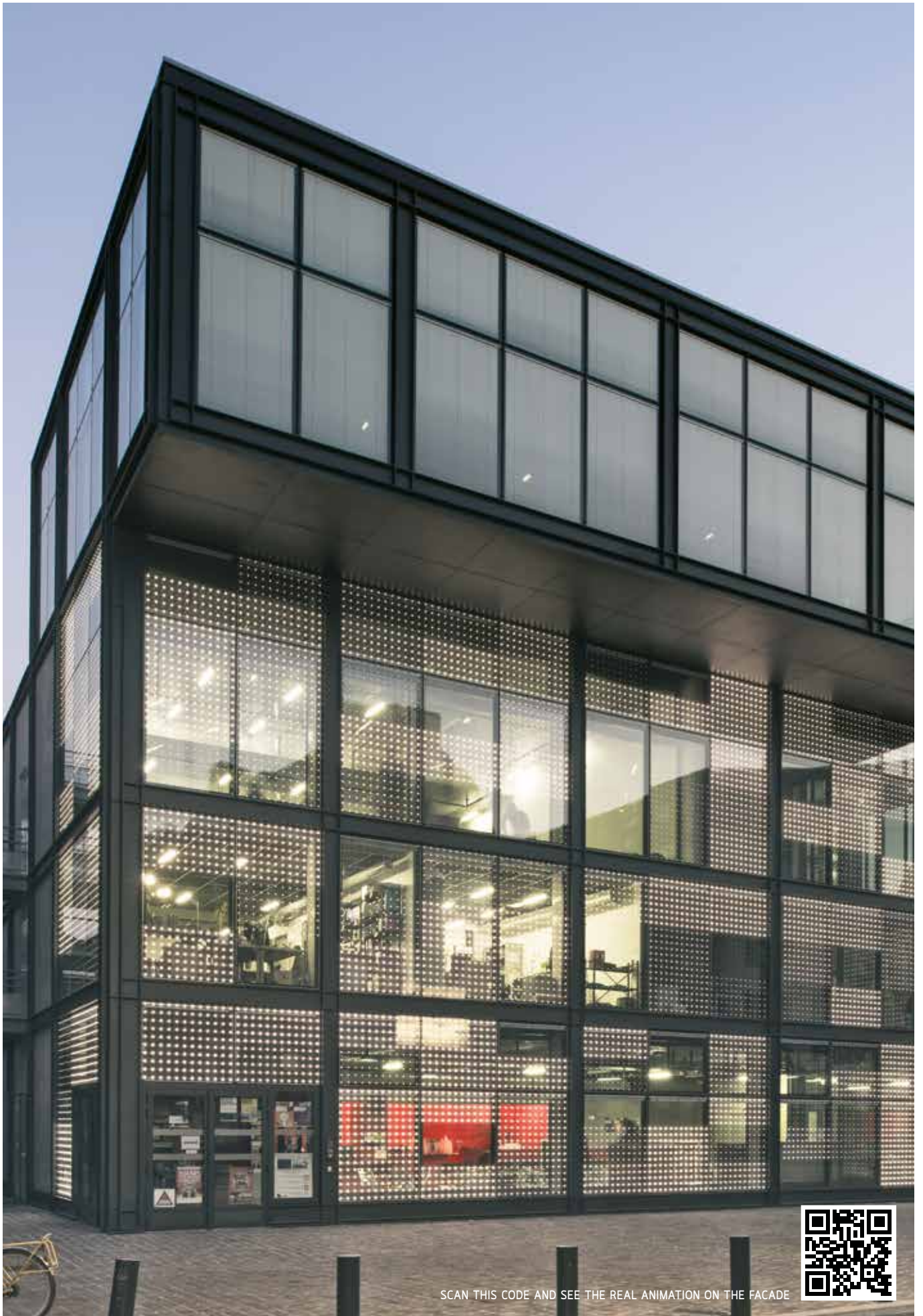


# ...A unique combination of light and transparency



## GLASSILED

Glassiled Sign	- 06
Glassiled Motion	- 08
Glassiled Smart	- 10
System Diagram for Glassiled Motion and Smart	- 11
Technical specifications	- 12
European quality, superb manufacture	- 13
AGC and SmartiWorks: a winning combination	- 14



SCAN THIS CODE AND SEE THE REAL ANIMATION ON THE FACADE



# Light up your projects

## — GLASSILED —

Light is not just a vital part of our everyday lives, but a major source of inspiration when planning workspaces, homes and commercial buildings. It drives architects and designers to seek out innovative modes of expression. Now you can harness the LEDs<sup>(1)</sup> embedded inside Glassiled to open up whole new dimensions for your creativity. The LEDs – either monochrome or RGB<sup>(2)</sup> – are powered via a super-efficient, transparent conductive layer. Vision is not obstructed and the glass retains its primary function: transparency. And then, at the flick of a switch, you can illuminate your medium and transform it any way you wish. No longer a mere construction material, glass is now a vehicle for your unique creative powers!

(1) Light-emitting diodes

(2) Red, green, blue

# Unveil your signature

## GLASSILED SIGN

Glassiled Sign adds a distinctive touch to your projects. Feel free to play with monochrome LEDs (available in a wide range of colours) to seamlessly and permanently embed your design (signature, logo, image, letters, numbers, etc.) right into the facade or glazed surface.

What's so special about it?

What does this mean for you?

**Pleasing, high-impact appearance** – Customised integration of your design in the building or on the chosen medium  
– Your creation is visible day and night; embedded LEDs can be combined with screen-printing on the glass

**Invisible wiring** – The glass retains 99% of its transparency  
– The glass does not have a 'plastic' appearance, nothing to disrupt or spoil your design

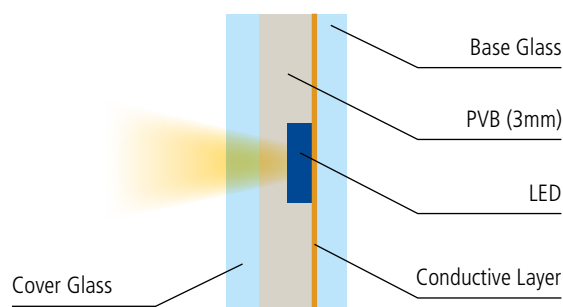
**Design protection** – Once it's been decided, your design is programmed and your message remains intact for years

**Incorporation of a special PVB** – The LEDs are visible from very far away thanks to their high power  
– The LEDs retain their full light output for 100,000 hours even in high power mode

**Combinations with other glass products** – Can be adapted to all requirements and assembled in double glazing for thermal insulation and solar protection, in laminated glazing for safety and security, in structural glazing for design purposes, etc.

**High safety standards** – Glassiled Sign delivers the same level of quality and the same guarantees as AGC's other safety and security glazings. They comply with European CE certification requirements for laminated glass and toughened glass

Glassiled Sign is also the perfect solution for industrial applications (since Glassiled Sign is a customised solution, minimum order quantities apply).





ISSY-LES-MOULINEAUX (FRANCE) | GALEO BUILDING, 2011 - ARCHITECT: CHRISTIAN DE PORTZAMPARC - GLASSIED SIGN COMBINED WITH ARTLITE DIGITAL, 100 MM PITCH - 30 M<sup>2</sup>

# Bring your facade to life

## GLASSILED MOTION

Imagine a glass facade. Pure and elegant by day, but when night falls it comes to life at the flick of a switch, transforming into a giant screen, a powerful, visual and interactive medium. You create your design and the facade broadcasts it faithfully through its independently controlled LEDs. Want to change the initial design? No problem. The facade can be modified whenever you want.

What's so special about it? | What does this mean for you?

**Optimum performance thanks to a patented double silver conductive coating on the glass** – Very low energy consumption  
– Very high luminosity (visible up to 3 km away)

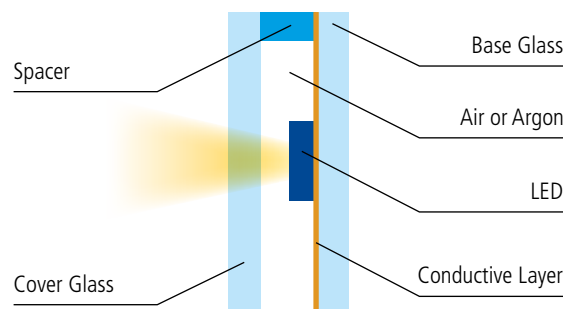
**Just one cable for each glass panel** – Easy to install  
– Compatible with most frames currently available on the market

**No additional installation or maintenance required on the facade once it has been installed in double glazing** – The double glazing provides thermal insulation by default  
– The electronic components are protected within the double glazing or inside the building  
– The LEDs are protected from moisture and atmospheric deterioration  
– Possibility of combining multiple functions: solar protection, enhanced thermal insulation, design

**Invisible wiring** – The glass retains 99% of its transparency  
– No LED strips; no film or any other component that can spoil your design

**Multiple electrical wires are combined into single cables up to 30 metres in length** – Easier installation and maintenance of the electronics within the building

**Energy-efficient system** – Due to very low power consumption, there is no degradation of the double glazing properties or the electronics components in the glass  
– Low operating cost







**SURGUT (RUSSIA)** CULTURAL CENTRE «NEFTYANIK», MT ELECTRO, 2016 - GLASSILED MOTION COMBINED WITH ARTLITE DIGITAL, 125 MM PITCH - 550 M<sup>2</sup>

# No reflection

## GLASSILED SMART\*

Would you like to add a luminous touch to an existing building without having to undertake a major renovation? Now you can thanks to Glassiled Smart, a product that enables you to replace individual glass assemblies while keeping the original frames. The look of the facade glass is retained and the general architecture of the building is not changed at all. And none of the light from the LEDs is reflected back into the interior of the building, making this the ideal product for hotels, apartment buildings and office blocks. Glassiled Smart delivers all the creative possibilities offered by Glassiled Motion, but for existing buildings!

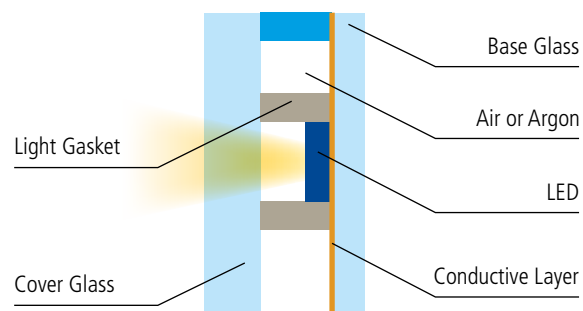
What's so special about it?

What does this mean for you?

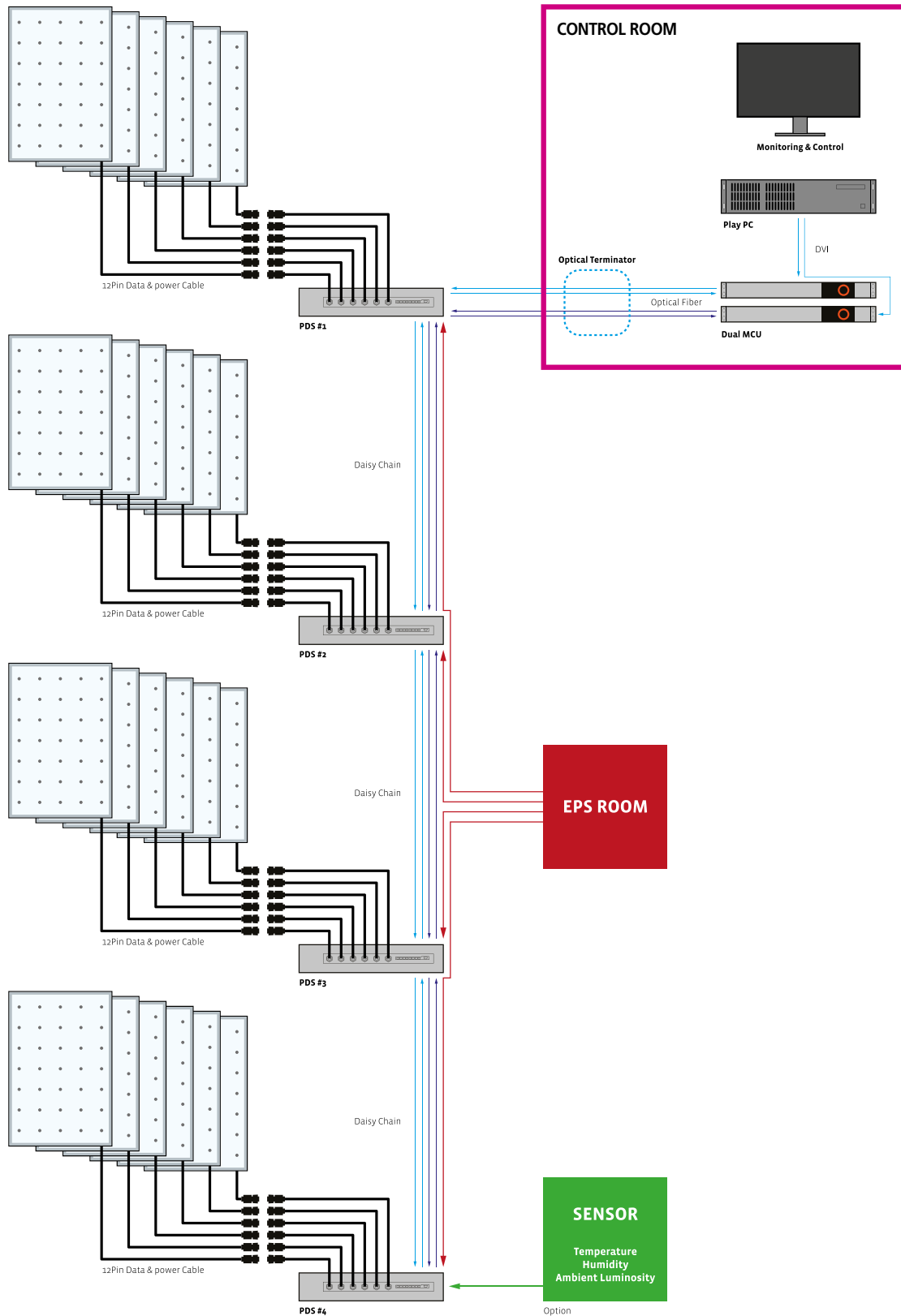
**Incorporation of an optical component for each LED to prevent any reflection** – Interior reflection of less than 0.01%  
– Residents inside the building are not distracted or disturbed when the facade is illuminated

**No wires** – Since a connector is used instead of a cable, original glass units can be replaced individually  
– Once installed, the cable is connected from the interior of the building and concealed in the frame

\* Glassiled Smart is a patented solution developed in cooperation between AGC and SmartiWorks.



# System diagram for Glassiled Motion and Smart



# Technical specifications

	<b>Glassiled Sign</b>	<b>Glassiled Motion</b>		<b>Glassiled Smart</b>
Type of LEDs	Monochrome	RGB	Monochrome	RGB
Minimum Order Quantity (m <sup>2</sup> )	30	100	50	200
Transparency	99%	99%	99%	98%
Reflection	4%	8%	8%	< 0.01%
Maximum size (mm)	2700 X 1500	2700 X 1500	2700 X 1500	2700 X 1500
cd / LED	4	2.3	18	2.3
Minimum pitch	Flexible	93.75	62.5	93.75
Minimum pitch if glass width < 800 mm	Flexible	70	40	93.75
Typical power consumption for 100 mm LED distance at max intensity (W/m <sup>2</sup> )	35	20	35	20
Number of cables	1	1 or 2	1 or 2	0
Temperature range	-55°C to 85°C	-55°C to 85°C	-55°C to 85°C	-55°C to 85°C
Max working temperature (inside glass)	50°C	50°C	50°C	50°C
Laminated glass	Yes	Exterior glass only	Exterior glass only	Exterior glass only
Spider fixation (point fixed glazing)	Yes	Yes	Yes	Yes
Double glazing	Yes	Yes	Yes	Yes
Painted or coated exterior glass	Yes	Yes	Yes	Yes
Compatible with standard frames	Yes	Yes	Yes	Yes
Toughened glass	Yes	Yes	Yes	Yes
Construction grade material	Yes	Yes	Yes	Yes
Refurbishment business	Limited	Limited	Limited	Yes
Turn key project (including electronics & installation)	Yes	Yes	Yes	Yes

# European quality, superb manufacture

Glassiled products are manufactured entirely in Belgium on a fully automated production line at our modern, specially designed plant. We work only with high-quality components. We guarantee that all Glassiled products, developed and manufactured by AGC are in strict compliance with very high quality standards and conform to European CE requirements for glass and electronic components.



# AGC and SmartiWorks: a winning combination

AGC Glass Europe is the European branch of AGC, the world's leading flat glass maker. Its core assets are its innovative drive in advanced glass technologies, a global sales network and an industrial presence stretching from Spain to Russia. Its expertise has enabled it to invest all of its know-how and experience in the development of Glassiled, guaranteeing a high-quality product in terms of appearance, safety, thermal insulation and acoustic insulation, but without in any way limiting the options for attaching and assembling frames.

SmartiWorks developed all of the electronic components and control systems for Glassiled. It has more than 10 years of experience in managing international projects involving architectural lighting and facade media.

AGC and SmartiWorks joined forces to create Glassiled, an excellent product that combines the best in glass and light. Now you can harness their respective areas of expertise to meet and exceed your creative expectations. Enjoy our personalised, professional service during the design and installation of your customised product, as well as our superb after-sales service.





#### GENERAL CONTACT

AGC Glass Europe

Xavier Sahyoun

T: +32 497 546 885

Sales.glassiled@eu.agc.com - [www.yourglass.com](http://www.yourglass.com)

#### MIDDLE EAST & SOUTH KOREA

SmartiWorks co.ltd.

Hank Song

T: +82-10-6352-4916

ceo.hank@smartiworks.com - [www.smartiworks.com](http://www.smartiworks.com)



#### AGC GLASS EUROPE, A LEADER IN FLAT GLASS

AGC Glass Europe is the European branch of AGC, the world's leading flat glass producer. Its baseline, Glass Unlimited, reflects its core assets: innovative strength in advanced glass technologies, a global sales network and an industrial presence stretching from Spain to Russia. AGC Glass Europe has representatives worldwide - See [www.yourglass.com](http://www.yourglass.com) for further addresses.



#### AGC AND SMARTIWORKS : A WINNING COMBINATION

Smartiworks develops electronic components and control system, and has many years of experience in development of architectural lighting projects. AGC and SmartiWorks joined forces to create Glassiled, an excellent product that combines the best in glass and light.

